



From the Office

Dear Parents

We would like to inform you regarding the developments of our Astro. Please take note that after the holiday, we will be making use of the "Rakker Astro". I sincerely believe we will experience the excitement on the field during the first match. In the same breath, I once again want to thank the *Bondev Trust* for making this dream a reality for our school.

With a quick look back at the first term, we can truly give thanks to our Heavenly Father. We have been, and continue to be, richly blessed at the school. Despite the many challenges currently taking place abroad, there is still so much to be grateful for.

It is also for this reason that I want to thank every teacher and learner for their continued perseverance in academics. Amid an extremely busy programme, I believe we have still maintained a healthy balance between Academics, Sport, Culture and enjoyment.

Things are going well at school. Our children are happy. It brought me so much joy to walk through the corridors and see the happy, smiling children. Every boy and girl who greets you - gives a hug, a handshake or a fist pump, and looks you in the eyes while doing so, makes one feel truly positive about everything.

At the end of this term, I would like to say a sincere thank you:

Thank you, dear parents, for your support. Thank you for raising such wonderful children.

Thank you, colleagues, for your hard work. Thank you for truly caring.

Thank you, dear children, for your fantastic cooperation.

Thank you for always giving your best. I honour you for that.

Thank you, dear Lord, for Your immeasurable grace. Thank You for being with us this term. Thank You for Your presence here every day. Thank You for loving our school.

May our school always be a place of love and dignity.

May every family experience God's love during the Easter season.

Lastly, I leave you as parents with the following thought: **"Rest when it is needed – it is not laziness, but an act of self-care that allows you to live life to the fullest again."**

Enjoy the holidays!

NICO LOGGENBERG
PRINCIPAL

**Work until it's
time to rest. Then
rest until it's time
to work.**



INFORMATION



THE SCHOOL OPENS DV ON TUESDAY, 14 APRIL 2026



REPORTS

The Gr 1-7 reports will be available on the Edana Smartphone App on Friday, 27 March, at 10:00.



**DOWNLOAD THE
EDANA APP**



INTERSEN PHASE

Weights per subject to determine an average at the end of the term are calculated as follows:

- Home Language = 20%
- First additional Language = 15%
- Mathematics = 20%
- Science = 15%
- Geography = 10%
- History = 10 %
- Computers = 5%
- Robotics & Technology = 5%

INTERSEN PHASE

Weights per term to determine an average at the end of the year are calculated as follows:

- Term 1 - 20%
- Term 2 - 20%
- Term 3 - 20%
- Term 4 - 40%

SCHOOL UNIFORM - TERM 2

Tuesday, 14 April to Friday, 24 April:

- Learners may wear their summer uniform **OR** winter uniform.
- Learners must wear either a full summer uniform **OR** a full winter uniform.
- Winter and summer uniforms **may not** be mixed.

Monday, 4 May to Friday, 29 May:

- We will officially switch to winter uniform on Monday, 4 May.
- Learners wear full winter uniform only.

Monday, 1 June to Friday, 26 June:

- Learners may wear formal winter uniform **OR** tracksuits from Monday to Thursday.
 - Learners must wear their formal winter uniform and school blazer for Friday assemblies and/or prize-giving days.
- Tracksuits may not be worn on these days.**

Term 3:

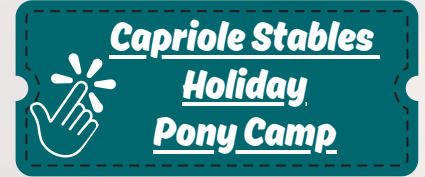
The official date on which we will switch to summer uniform, will be communicated in Term 3.



LMRP INTRODUCTORY STUDY COURSE

This course takes place on Saturday, 18 April, and is mainly for our Grade 4 learners and any new learners. Please follow the link below to enrol your child.

 [LMRP STUDY COURSE](#)



UNIFORM SHOP HOLIDAY HOURS (MARCH - APRIL 2026)

Friday, 27 March	07:00-15:00
Saturday, 28 March to Wednesday, 8 April	CLOSED
Thursday, 9 April and Friday, 10 April	08:00-16:00
Monday, 13 April	08:00-17:00
Tuesday, 14 April	07:00-17:00

Urgent queries   064 937 0551



Congratulations to our 2026 Spelling Bee Champions!

We were amazed by their spelling abilities, and especially by the confidence they showed when spelling unfamiliar words.

Winners

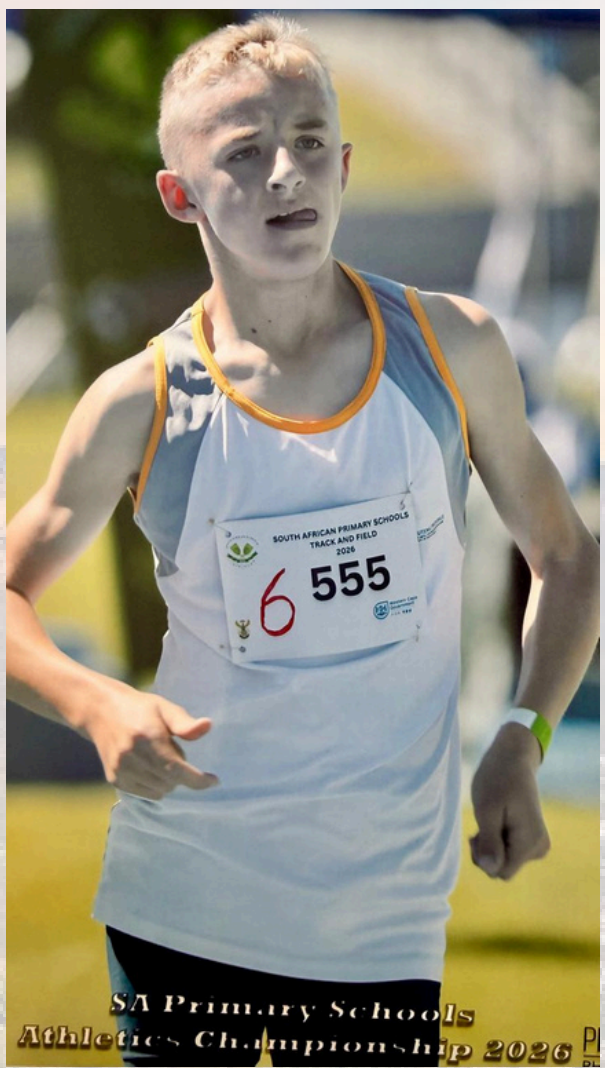
- Grade 4: Arielle Basson
- Grade 5: Philly Mwandira
- Grade 6: Eli Modena
- Grade 7: Noah Senatla & Adam Bernardo





RAKKER ATHLETICS STAR

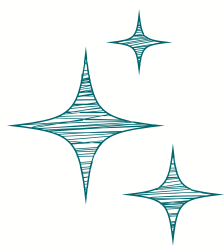
Step by step, marching into the Cape!
Congratulations to Hein Parrot on his outstanding performance at the SA Championships held in Cape Town. Hein competed in an extremely competitive race, where the lead kept changing. He walked a personal best time of 7:38.21 – equal to 1,000 points on the ASA table. Well done, Hein! We are incredibly proud of you!



SA Primary Schools Athletics Championship 2026



Congratulations to Amy & Harper du Plessis, the winners of the Open Day stationery pack!



LAERSKOOL MIDSTREAM RIDGE PRIMARY GHOLFDAG / PADEL GOLF DAY / PADEL

**DONDERDAG
18 JUNIE 2026**



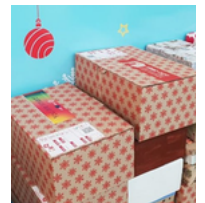
**THURSDAY
18 JUNE 2026**

SAVE THE DATE!!



MANDELA DAY OUTREACH PROJECT

In preparation for our annual Outreach project, Mandela Day, which takes place in July, we are in need of empty shoeboxes. More information regarding the project will be communicated soon.



MC GRADE 8 ADMISSIONS (2027)

Grade 8 admissions for 2027 are open from 19 January until 27 April 2026. If you would like your child to attend Midstream College, kindly note that you have to complete the application form online.

Please consult the Midstream College website for the relevant guidelines and online form.

<https://www.midstreamcollege.co.za/admissions/> For any high school admission enquiries, contact

Ms Anique van Zyl. (admissions@midstreamcollege.co.za)

LMRP GRADE 1 ADMISSIONS (2027)

We are pleased to inform you that applications are now open for Grade 1 (2027).

We encourage all interested parents to submit their applications. Applying on time helps you complete any administrative procedures and preparations in time, making the process smoother for you and your child(ren). To apply, please visit [MRP ADMISSIONS](#) for detailed information and instructions on how to complete the online application. Should you have any questions or require assistance with the application process, please feel free to contact **Corrie Burger** in our admissions office (corrieb@midstreamridgeprimary.co.za or 012 940 9122).



SUPPORTERS' CLUB

PRESENTS
FUNDRAISER
PADEL TOURNAMENT



MIDSTREAM
PADEL CLUB

SAVE **21** AUG
2026

FRIDAY · 21 AUGUST 2026

MIDSTREAM PADEL CLUB

TOURNAMENT DETAILS



Americano
FORMAT



72 Players
TOTAL ENTRANTS



3 Categories
24 PLAYERS EACH



3 Courts
IN PLAY



8 Rounds
10 MIN EACH · ROTATION EVERY
ROUND



Top 4
ADVANCE TO FINALS



± 5 Hours
TOTAL TOURNAMENT TIME

Grab your padel partner & block your diary —
more details dropping very soon!



FACEBOOK
Clubstream Midstream



INSTAGRAM
@clubstream_midstream



WEBSITE
www.clubstream.co.za

IMPORTANT SCHOOL LINKS

<p>Calendar</p>		<p>The general school calendar for the year. It is updated with every newsletter.</p>
<p>Sport Calendar (Term 2)</p>		<p>The sports calendar is updated daily and is "live"! It can be found in the "DOCUMENTS FOLDER" in the Edana app.</p>
<p>Aftercare Centre</p>	<p>@RAKKERCARE</p>	<p>Enrol your child for aftercare.</p>
<p>LMRP Action Photos</p>		<p>Parents are welcome, and encouraged, to send us action photos, from any of our school events and gatherings, using this link.</p>
<p>Edana App</p>		<p>How to download and install the Edana school communication app on your smartphone.</p>
		<p>How to adjust your settings to receive the Edana App notifications on your smartphone.</p>
<p>Google Classroom</p>		<p>How to download and install Google Classroom on your smartphone.</p>
		<p>How to access Google Classroom on your computer.</p>
<p>Social Media Consent</p>		<p>Please complete this link regarding social media consent.</p>
<p>Facebook</p>		<p>Please follow our Facebook page.</p>
<p>Instagram</p>		<p>Please follow us on Instagram.</p>
<p>Updating of Medical Records</p>		<p>It is very important that we keep up-to-date medical records for all learners. Please update this information as necessary.</p>